

Plot 101 Belgrave, Mytton Oak Manor, Bowbrook, Shrewsbury, SY3 5BT
£255,000



Plot 101 Belgrave, Mytton Oak Manor, Bowbrook, Shrewsbury, SY3 5BT

£255,000

The Belgrave is a two-bedroom semi-detached or terraced home from the Legacy Collection of Shropshire Homes, a reputable and award winning local builder. The property offers an attractive and well-designed layout, driveway parking for two cars, and a private rear garden, while being located on a popular brand-new development within a sought-after area of the town.

Description

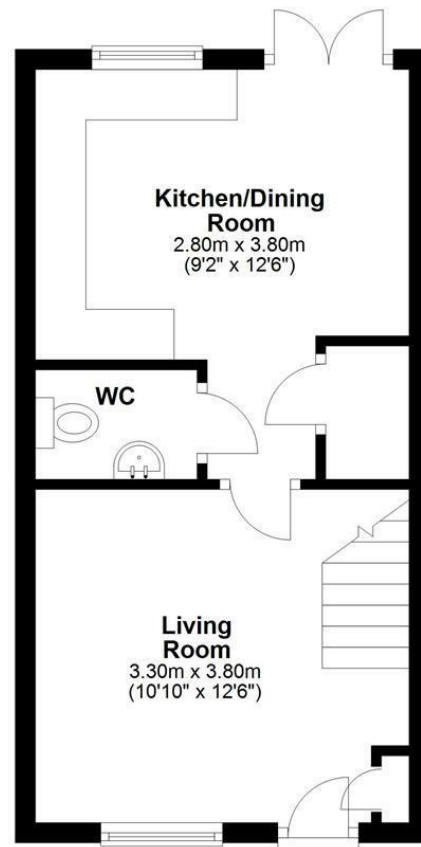


null
Council Tax Band: New Build
Available:
EPC:

Floor Plans

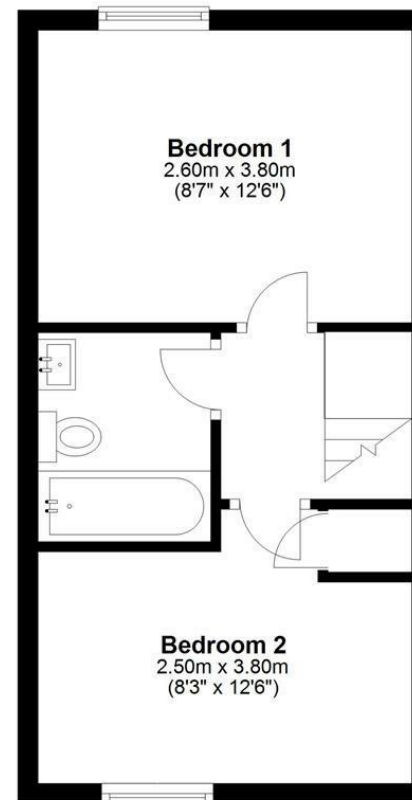
Ground Floor

Approx. 27.6 sq. metres (297.0 sq. feet)



First Floor

Approx. 26.9 sq. metres (289.4 sq. feet)



Total area: approx. 54.5 sq. metres (586.4 sq. feet)

These particulars, whilst believed to be accurate are set out as a general outline only for guidance and do not constitute any part of an offer or contract. Intending purchasers should not rely on them as statements of representation of fact, but must satisfy themselves by inspection or otherwise as to their accuracy. No person in this firm's employment has the authority to make or give any representation or warranty in respect of the property.